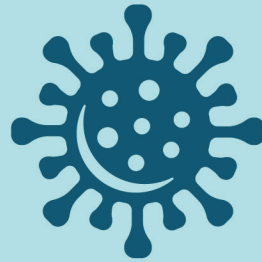


Guidelines For Return To Campus



COVID-19

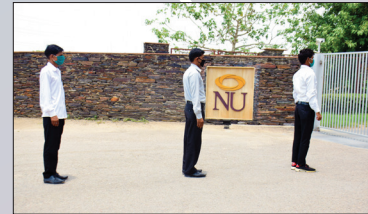
CORONAVIRUS



Arrival at NU

Main Gate

- i. Please come in a queue while entering the main gate. Ensure everybody maintains social distance (2meters).



- ii. Follow instructions of the security guard.



- iii. Screening of all students and employees to be carried out at the Main gate.



TEMPERATURE CHECKING

- iv. Wash your hands before entry.



- v. Wear mask while entering the Campus.
In case any person does not possess, it will be issued at the Main gate.

- vi. Sanitisation of all luggage/ baggage and vehicles will be carried out at the Main Gate.



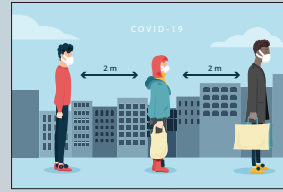
SANITIZATION OF VEHICLE



Entry to Buildings



i. Walk in your lane with social distancing.



ii. Wash your hands before entry.

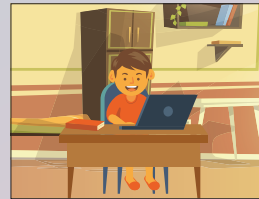


iii. Always wear your mask.

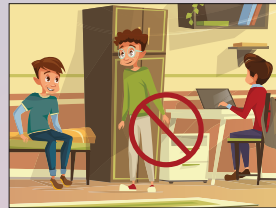


WEAR MASK

iv. Remain inside your allotted rooms.



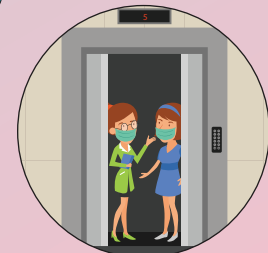
v. Do not go to any other room.



vi. Do not crowd in corridors or toilets.



vii. Only two persons at a time in the lift.



Norms in Academic Blocks



- i. Sanitize your hands before entering a class / lab or office.



- ii. Sit only on spaces marked on the seats as per social distancing norms in classrooms (CRs), labs and library (LIRC).



- iii. Maintain social distancing in meetings. The number of seats has been reduced from all meeting room as per social distancing norms.



- iv. Walk in your lane as per marking in corridors of Academic Blocks for two side movement in file with social distancing.



v. Walking, Jogging, Cycling, Running and Yoga are permitted with social distancing.



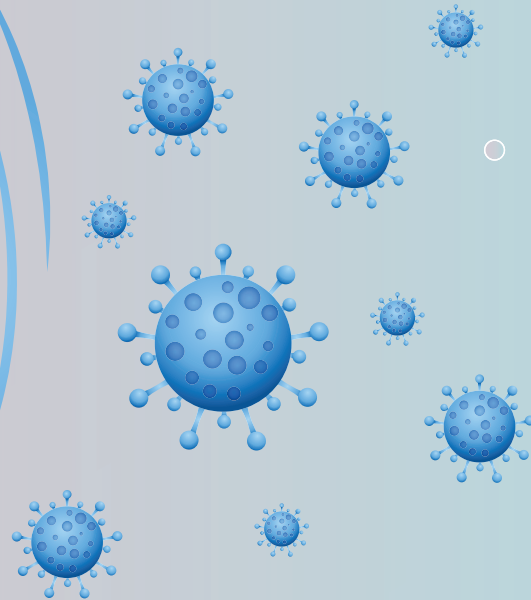
vi. Contact games suspended till further order.

vii. Gymnasium closed.





STAY SAFE
STAY HEALTHY
STAY CONNECTED



Let's fight it together